

# B&M

Industrial Services GmbH

## BM STS Series

Semi-automatic / Automatic  
Tax Stamp Applicator

**EXCEL**  
PACKAGING MACHINERY LIMITED



## BM STS 100

Semi-automatic Tax Stamp Applicator



### Ergonomic & flexible

- adjustable work height
- lockable rollers
- fits through standard doors

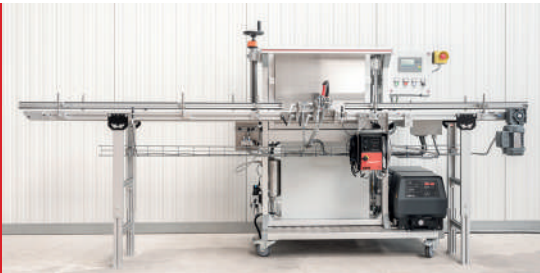


### User friendly

Touchless start of application of all materials by capacitively sensor in the back plate

## BM STS 200

Automatic Tax Stamp Applicator



### Plug & Play upgrade to automation

Placing belt, plug in power and compressed air – Start Production!

Driven by compressed air, labelling up to 50 products per minute

## BM STS 200+

Automatic Tax Stamp Applicator

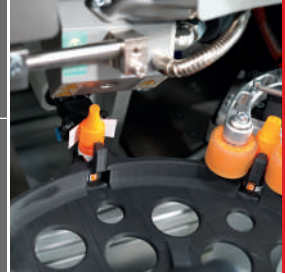
Servo driven version of the BM STS 200 capable to label up to 120 products per minute.

# BM STS 200 B

Automatic Tax Stamp Applicator for bottles

## Material saving

Application directly to the bottle without extra carton



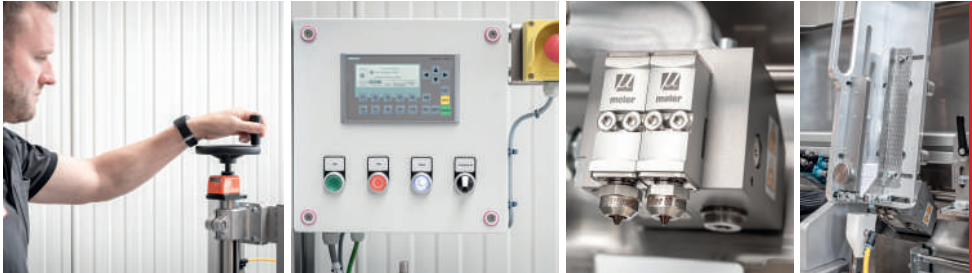
## Different format and orientation

Tax stamps can be applied to different sizes of bottles either vertical or horizontal around the bottle neck



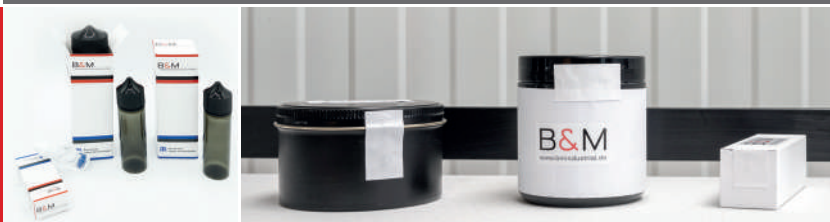
# BM STS Series

Technical Details



- Electrical power 400/230 VAC 3P/N/PE 50 Hz CEE plug 16 A
- Compressed air 6 bar steadily from external source
- Siemens HMI and SPS for future retrofitting of components
- PILZ safety equipment
- Hot melt system by Meler, with pre-heating function of the glue
- two glues nozzles with easy access for cleaning
- adjustable tax stamp magazine for different sized tax stamps

We apply tax labels to any products of requirement. Tins, boxes, buckets or bottles for tobacco, shisha or e-liquid products.



**B&M** \_\_\_\_\_  
Industrial Services GmbH

## B & M Industrial Services GmbH

Max-Planck-Str. 81  
27283 Verden | Germany

T +49 (0)4231 / 97137-50  
E [info@bmindustrial.de](mailto:info@bmindustrial.de)

**EXCEL**  
PACKAGING MACHINERY LIMITED

## UK Agent: EXCEL Packaging Machinery Ltd.

UNIT C5, Regent Park  
Summerleys Road  
Princes Risborough  
Bucks HP27 9LE | United Kingdom

T +44 (0)1865 / 400489  
E [info@excel-packagingmachinery.com](mailto:info@excel-packagingmachinery.com)